

# WALLIX PAM4ALL

Unified Access and Privilege  
Management Solution



REGAIN  
CONTROL OF  
YOUR ACCESS

WALLIX  
CYBERSECURITY SIMPLIFIED

# Cybersecurity Challenges Companies Face

New digital uses (remote work, Cloud migration, connected objects...) lead to a paradigm shift. The corporate security perimeter no longer exists. Users, whether humans or machines, access corporate data and systems from anywhere. As employees, suppliers, and partners access and share more and more data, the number of vulnerabilities and risks continues to increase. But how can companies have visibility and control of all their access? How can their attack surface be reduced?

The challenge is to provide companies with the agility and interoperability they need to develop their business, without exposing them to new cyber risks that could result in business disruption, data leakage, infrastructure downtime, loss of access to customer files, etc.



## WALLIX PAM4ALL

### The Unified Access and Privilege Management Solution

PAM4ALL reduces risks related to access and associated privileges, allows granular management of remote access, and provides access only for specific uses and durations, significantly minimizing the attack surface without affecting productivity and in compliance with regulatory guidelines.

PAM4ALL protects, controls, and manages all users' access to all your assets, for all sessions and for all endpoints, at the right time and from anywhere.





# WALLIX PAM4ALL

/ SESSION TRACKING

*Be compliant*



/ PASSWORD PROTECTION

*Avoid exposure*



/ REMOTE ACCESS PROTECTION

*Defend your information system*



/ LEAST PRIVILEGE MANAGEMENT

*Remove local rights*



/ STRONG AUTHENTICATION

*Reduce the risks*





# Session tracking & password protection

## Centralized Control and Monitoring of Privileged Access to Sensitive Assets

Hackers leverage privileged accounts to infiltrate and spread within organizations. **WALLIX PAM4ALL** bastion is a leading PAM solution that delivers robust security and oversight over privileged access to critical IT infrastructure. Throughout your digital transformation, this bastion can be seamlessly deployed from on-premises to private and public cloud infrastructures.

## Features & Capabilities

### Reduce your Attack Surface

- Discover assets automatically and remove all local privileged accounts.
- Set up authorization rules to supervise critical systems access
- Use the least required privilege to perform tasks.
- Attribute privileges "Just-In-Time" for authorized users.

### Manage Secrets

- Store secrets of human and non-human users securely.
- Protect passwords through automatic, periodic or login/logout-based password rotation.
- Remove passwords from disks.

### Control Sessions

- Monitor sessions in real time with the "Session Sharing" feature.
- Record full sessions and extract related metadata for audit purposes.
- Raise alarms or terminate sessions when malicious activity is detected.

### Audit Activity

- Manage KPIs with reports and dashboards.
- Correlate suspicious behavior with a SIEM solution.

### Install easily

- Deploy quickly and without interrupting your work processes.

## Technical Specifications

- > **Encryption Algorithms:**
  - AES-256, SHA2
  - ECC p256, p381 and p515
  - High-quality keys for proxies
- > **High Availability:**
  - Clustering support
  - Disaster Recovery Plan
  - Integration with the company's backup system
- > **Access and Workflow Management:**
  - AD and LDAP directories
  - Identity and Access
  - Ticketing and workflow systems
  - AD Silos
- > **Authentication Methods:**
  - Username and Password, Kerberos, LDAP, NLA, Web SSO, RADIUS, PKI, SAML, etc.
- > **Monitoring:**
  - SIEM integration, SNMP, email notifications
- > **Public Cloud Environments:**
  - Amazon Web Services (AWS)
  - Microsoft Azure
  - Google Cloud Platform (GCP)

## What Our Customers Say

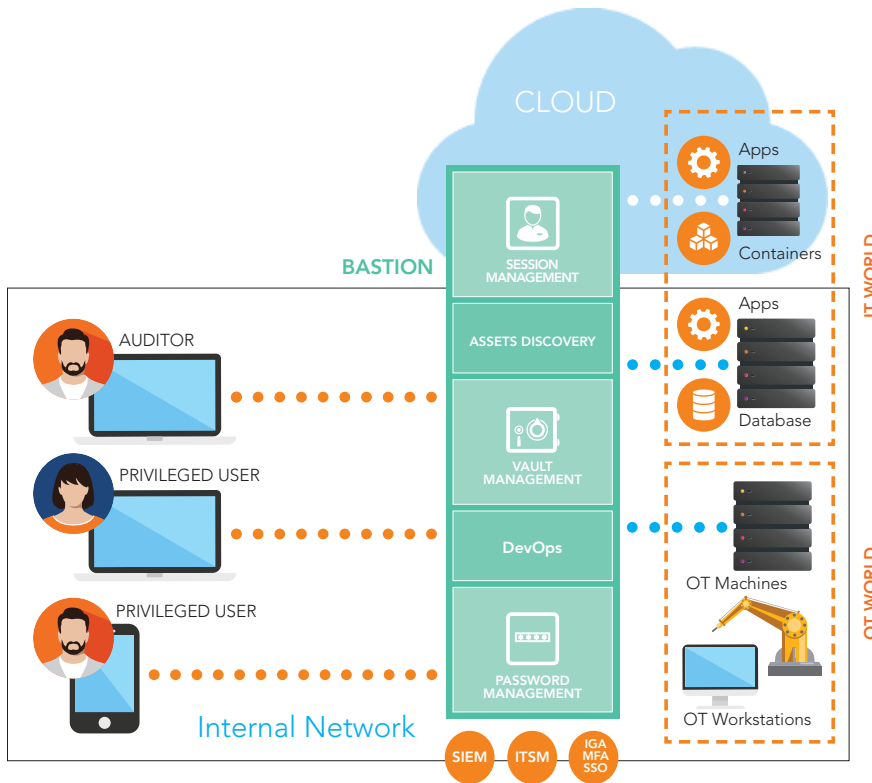
**"The product is very easy to install. In just one day we were able to use the solution to access our critical servers."**

Infrastructure and Operations Manager, Manufacturing Sector

**"Straightforward architecture, easy and fast initial implementation."**

Security Infrastructure Manager, Healthcare Sector

## How it Works



## Benefits



### Disable internal and external threats

Securely centralize privileged users and critical systems management



### Deploy in all environments

Integrate WALLIX PAM4ALL seamlessly into your on-premises, hybrid or cloud infrastructures



### Protect your access as you grow

Scale your infrastructure without any risk



### Ensure regulatory compliance

Avoid penalties by protecting and tracking access to your critical data



### Reduce your costs

Control your TCO thanks to simplified implementation and operation



# Remote access protection

## Centralized Management of Remote Access for Employees and Third Parties

With the increase in remote work and outsourcing of activities, external access has become essential to carry out IT administration and maintenance tasks. **WALLIX PAM4ALL** enables secure privileged access from external sources, such as remote workers or suppliers. **WALLIX PAM4ALL** is easy to integrate and also helps you to align security and compliance requirements with your digital transformation.

## Features & Capabilities

### Reduce your Attack Surface

- Dedicate access for external users through a single secured HTTPS gateway.
- Protect OT and IT critical assets with protocol break.
- Integrate with SSO or MFA (through WALLIX Authenticator or other providers).
- Grant temporary remote access to third parties and remote employees.

### Control and Audit Activity

- Save recordings and audit all user activity for all sessions.
- Monitor and audit external access to all your bastions from a single console.

### Simplify External Access

- Take advantage of SSH/RDP consoles embedded in a web browser.
- Use multiple authentication sources.
- Avoid fat client deployment and maintenance.

### Get started quickly and easily with the PAM4ALL remote access security module

- Native integration with the client's web browser.
- Rapid deployment to accelerate your digital transformation.

## Technical Specifications

### > Strengthen your security perimeter

- RDP and SSH over HTTPS
- Integrates with existing identity providers through SAML, X.509, Radius
- Compatible with WALLIX TruTelecom, an IDaaS solution that provides single sign-on (SSO), identity federation and multi-factor authentication (MFA)
- Ensures your compliance with regulatory and legal obligations

### > Operational efficiency

- No fat client
- Flexible HTML5 interface providing RDP and SSH consoles
- Dedicated Auditor profile
- Multi-tenant global search across all bastions
- Click-on-query to watch specific actions of a session

## What Our Customers Say

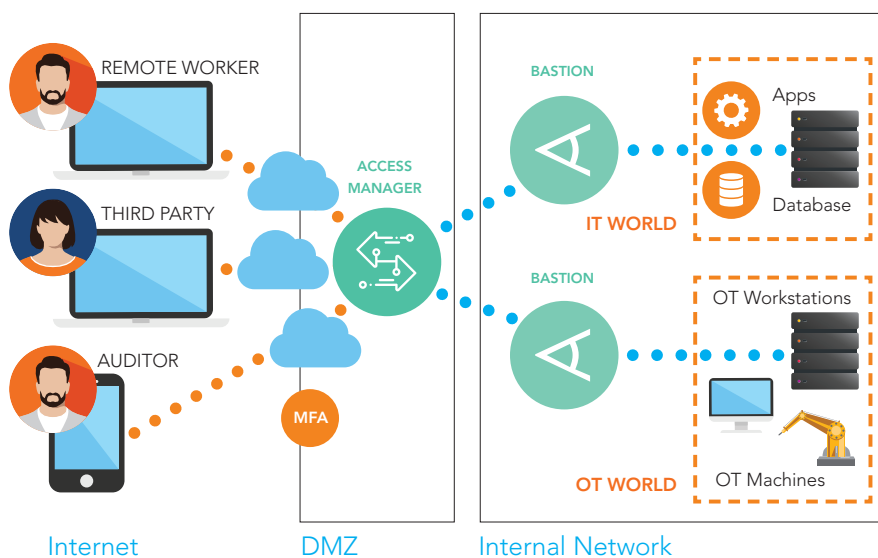
***"This product is very useful and easy to deploy. It is also very easy to maintain. This solution helps to achieve digital transformation."***

Data and Analytics Manager, Service Sector

***"WALLIX PAM4ALL meets our needs very well in terms of access control."***

Infrastructure and Operations Manager

## How it Works



## Benefits



**SECURE  
OUTSOURCING  
AND REMOTE  
WORKING**

Apply the Zero-Trust principle to external privileged access



**ENHANCE  
USER  
PRODUCTIVITY**

Maintain an optimal user experience through web browser access



**REDUCE  
COSTS**

Control your TCO with an approach without costly fat clients



# Least privilege management

## Secure Your Endpoints and Plan Your Least Privilege Strategy

Privilege escalation is at the heart of most cyber-attacks and system vulnerabilities. And yet, such security breaches can easily be avoided by implementing the Principle of Least Privilege. **WALLIX PAM4ALL** offers an innovative, application-level security solution that enables organizations to completely eliminate administrator accounts, significantly reducing security incidents without impacting productivity and in compliance with regulatory guidelines.

## Features & Capabilities

### The Principle of Least Privilege:

- The most desired approach, usually difficult to implement, is now possible.
- No need to use accounts with elevated permissions. Create a policy without administrators.
- No local administrators means unprecedented security on all endpoints.

### Anti-Ransomware:

- WALLIX PAM4ALL detects in real time when a process intends to perform an encryption operation before it is carried out.
- The process is stopped and PAM4ALL executes the actions set in the corresponding rule.
- In addition, WALLIX PAM4ALL offers the possibility of storing every encryption key for later decryption.

### Local Account Password Rotation:

- Organizations with many computers often have the same passwords for local accounts. PAM4ALL rotates these passwords, ensuring that there is one password per computer, account and day.
- Compromised passwords will only be valid on that computer, for that day, and only for that account.
- Any attempt to change the password will be reported and alerted.
- Also, predict future passwords without the need to connect to the network.

### Centralized Management:

- Fully integrated into Microsoft Active Directory, WALLIX PAM4ALL takes advantage of highly centralized management, high availability, and fault tolerance.
- The use of Active Directory means that WALLIX PAM4ALL does not require additional infrastructure (DB servers, web servers, etc.).
- The light agent will download the corresponding configuration, stored in local cache and applied even without network connection.

## Technical Specifications

- > **Application management:**
  - White, gray, and black lists
  - Ransomware detection and prevention
- > **Local user management:**
  - Rule-based group membership
  - Local password rotation
- > **Supported operating systems:**
  - Windows XP and Server 2003
  - Windows Vista and above
  - Linux (Debian, RedHat, Suse)
- > **Management:**
  - Active Directory integration
  - MMC snap-in
- > **Monitoring:**
  - Event-based
  - SIEM integration



WALLIX PAM4ALL uses WALLIX's exclusive patented technology to assign the necessary security context to each process or application, regardless of the user credentials with which it is executed. Unlike traditional tools on the market, with PAM4ALL privileges are granted to applications instead of users.

## Benefits



### **The fastest return on investment**

Implementing a full PAM4ALL environment can be done in a few hours thanks to its seamless integration with Active Directory.



### **100% scalable at zero cost**

Seamless integration with Active Directory along with a client-server approach (instead of the usual server-client) allows PAM4ALL to be as scalable as the organization itself.



### **Better security from day one**

Experts agree that the first step in following security best practices is the removal of administrator privileges.

Combined with monitoring enterprise applications, this prevents unapproved applications from running and reduces the overall attack surface.



### **A transparent principle for end users**

Efficiency consists in making the operating system itself the guarantor of security against intrusions, through prior restriction of privileges at the application level. PAM4ALL cannot be compared to an antivirus, as the latter has to examine every file.



# Multifactor Authentication for Privileged Access Management

## Strengthen Privileged Access Control with Multi-Factor Authentication

**PAM4ALL** provides enhanced protection. The combination of MFA/PAM provides true defense in depth and greatly enhances an organization's cybersecurity.

Improve your security with a Zero-Trust risk management policy. You can be confident that only the right people can use your PAM solution and access your sensitive systems and data.

## Features & Characteristics

### Deploy a "Zero Trust" framework

Take a "Zero Trust" approach to access security: multi-factor proof-based verification of a user's identity provides the confidence needed to access corporate systems.

### Native Integration with the PAM4ALL security solution

Implement strong authentication for PAM. Enjoy seamless user experience as well as simple integration and maintenance for uncompromised security.

### Unified, Secure, and Simplified Identification

Your users' names and passwords can be hacked or cracked: using a multi-factor authentication solution increases authentication security.

Eliminate password risks and have your privileged users use multiple credentials.



## Technical Characteristics

### > Specifications:

- SaaS model for identification and federation without any hassle
- Native client - AD & Azure AD connectors integration
- On-premises authorization federation with LDAP and Radius connectors
- FIDO2 biometric password-less authentication for simpler and better security
- Online: push notifications, no OTP
- Offline: time-based OTP

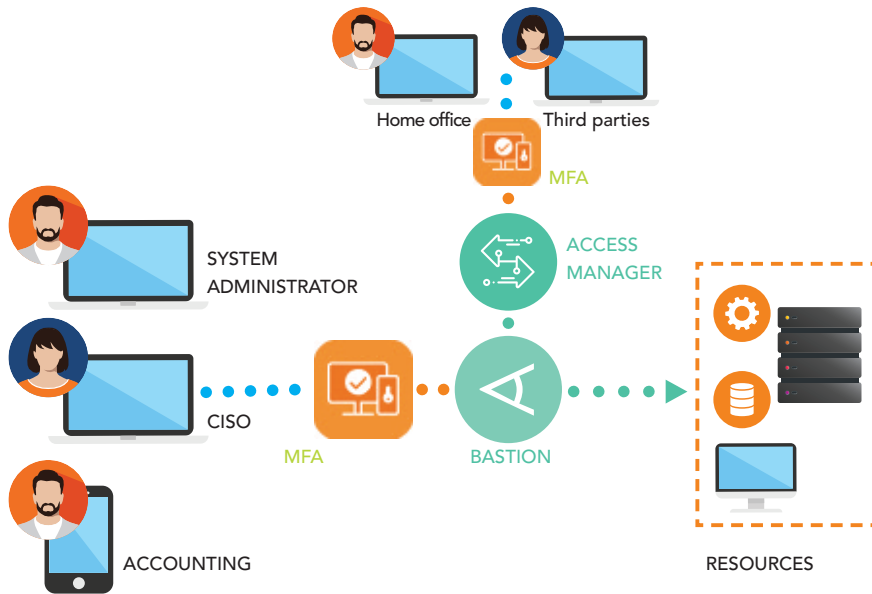
### > Application:

- Available on Android, iOS and Win10 clients

### > Native MFA in PAM4ALL:

- User identity provisioning:
  - Directories
  - Social logins (LinkedIn, Facebook, Google, etc.)
  - ID files (.csv)
  - API
  - As needed through web forms
- Integration in the PAM4ALL remote access security module:
  - SAML provider
- Integration in the Bastion:
  - Deployment and configuration of an LDAP/Radius interface

## How it Works



## Benefits



### Protect the company's investment

Enhanced security for on-site and remote privileged users



### Ensure regulatory compliance

Strengthen IT security practices as required by many regulations



### Enable the entire workforce to log in to all applications with one set of credentials

Thanks to WALLIX PAM4ALL, expand the MFA and SSO capabilities to your complete workforce



A software company providing cybersecurity solutions, WALLIX is the European specialist in Identity and Access Security Solutions.

A software company providing cybersecurity solutions, WALLIX is the European specialist in Identity and Access Security Solutions. WALLIX PAM4ALL, the unified privilege solution, enables companies to respond to today's data protection challenges. It guarantees detection of and resilience to cyberattacks, which enables business continuity. The solution also ensures compliance with regulatory requirements regarding access to IT infrastructures and critical data. WALLIX PAM4ALL is distributed through a network of more than 300 resellers and integrators worldwide. Listed on the Euronext (ALLIX), WALLIX supports more than 1900 organizations in securing their digital transformation. WALLIX is a founding member of the HEXATRUST group and has been included in the Futur40, the first ranking of growth companies on the stock exchange published by Forbes France and is part of the Tech 40 index.

WALLIX affirms its digital responsibility and is committed to contributing to the construction of a trusted European digital space, guaranteeing the security and confidentiality of data for organizations as well as for individuals concerned about the protection of their digital identity and privacy. Digital technology, whether for professional or personal use, must be ethical and responsible in order to pursue a secure societal digital transformation that respects individual freedoms.

#### **WALLIX FRANCE (HQ)**

250 Bis rue du Faubourg Saint-Honoré

75008 PARIS

Tel.: +33 1 53 42 12 81

**Contact us:**

[info@wallix.com](mailto:info@wallix.com)

[WWW.WALLIX.COM](http://WWW.WALLIX.COM)

